

S2019 Quiz 1

Name (print):

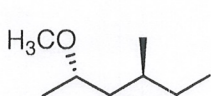
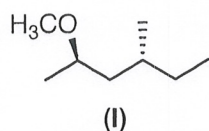
Recitation Instructor:

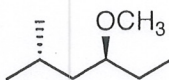
Signature:

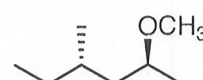
The following quiz will begin at 9:35 and go until 10:05. Please show all of your work. If you need to use the back of the paper, please make sure to make note of it in the space allotted. Good luck!

1. Draw (Z)-hept-2-ene using line-angle notation (3 points).

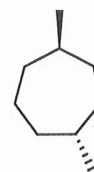
2. How are the following molecules related to compound I. Options are Constitutional Isomer, Enantiomer, Diastereomer, or Identical (9 points total, 3 points each)



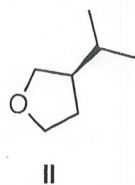




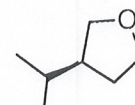
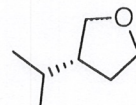
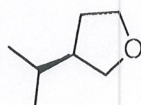
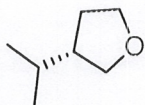
3. Is the following molecule chiral or achiral? How do you know? (4 points)



4. Circle the molecule(s) that are identical to II (4 points)



?
=



S2019 Quiz 1*

Name (print):

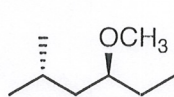
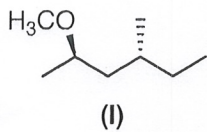
Recitation Instructor:

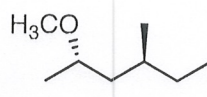
Signature:

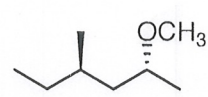
The following quiz will begin at 9:35 and go until 10:05. Please show all of your work. If you need to use the back of the paper, please make sure to make note of it in the space allotted. Good luck!

1. Draw (*E*)-oct-3-ene using line-angle notation (3 points).

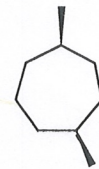
2. How are the following molecules related to compound I. Options are Constitutional Isomer, Enantiomer, Diastereomer, or Identical (9 points total, 3 points each)



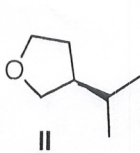




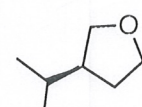
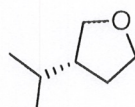
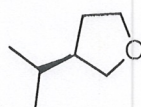
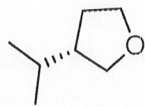
3. Is the following molecule chiral or achiral? How do you know? (4 points)



4. Circle the molecule(s) that are identical to II (4 points)



?
=



S2019 Quiz 1

Name (print): *Key*

Recitation Instructor:

Signature:

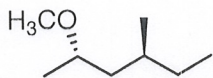
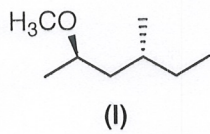
The following quiz will begin at 9:35 and go until 10:05. Please show all of your work. If you need to use the back of the paper, please make sure to make note of it in the space allotted. Good luck!

"Z" *alkene* *7 carbon chain*

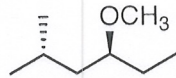
1. Draw (Z)-hept-2-ene using line-angle notation (3 points).



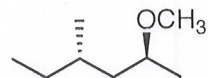
2. How are the following molecules related to compound I. Options are Constitutional Isomer, Enantiomer, Diastereomer, or Identical (9 points total, 3 points each)



enantiomer

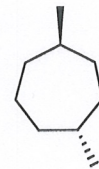
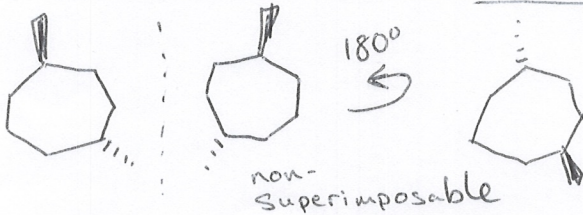


Constitutional isomer



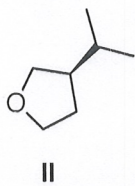
enantiomer

3. Is the following molecule chiral or achiral? How do you know? (4 points)

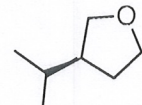
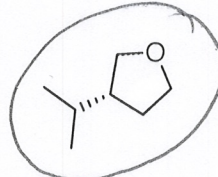
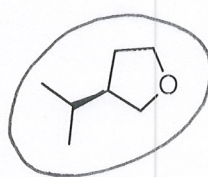
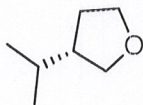


Chiral

4. Circle the molecule(s) that are identical to II (4 points)



?
=



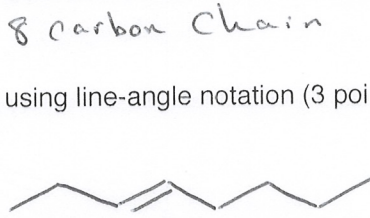
S2019 Quiz 1*

Name (print): *Kay*
 Signature: *[Signature]*

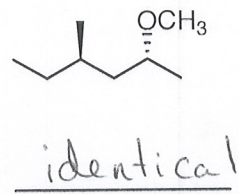
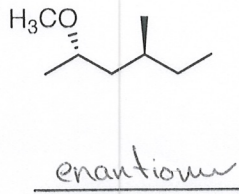
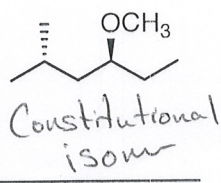
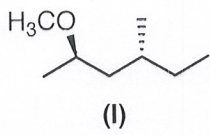
Recitation Instructor:

The following quiz will begin at 9:35 and go until 10:05. Please show all of your work. If you need to use the back of the paper, please make sure to make note of it in the space allotted. Good luck!

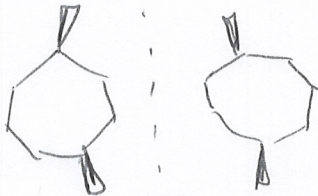
alkene "E" →
 1. Draw (E)-oct-3-ene using line-angle notation (3 points).



alkene @ 2 position →
 2. How are the following molecules related to compound I. Options are Constitutional Isomer, Enantiomer, Diastereomer, or Identical (9 points total, 3 points each)



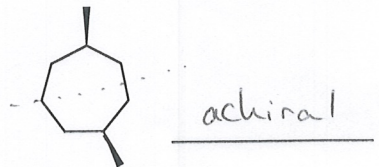
3. Is the following molecule chiral or achiral? How do you know? (4 points)



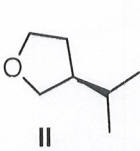
180°



Same / Superimposable mirror image



4. Circle the molecule(s) that are identical to II (4 points)



? =

